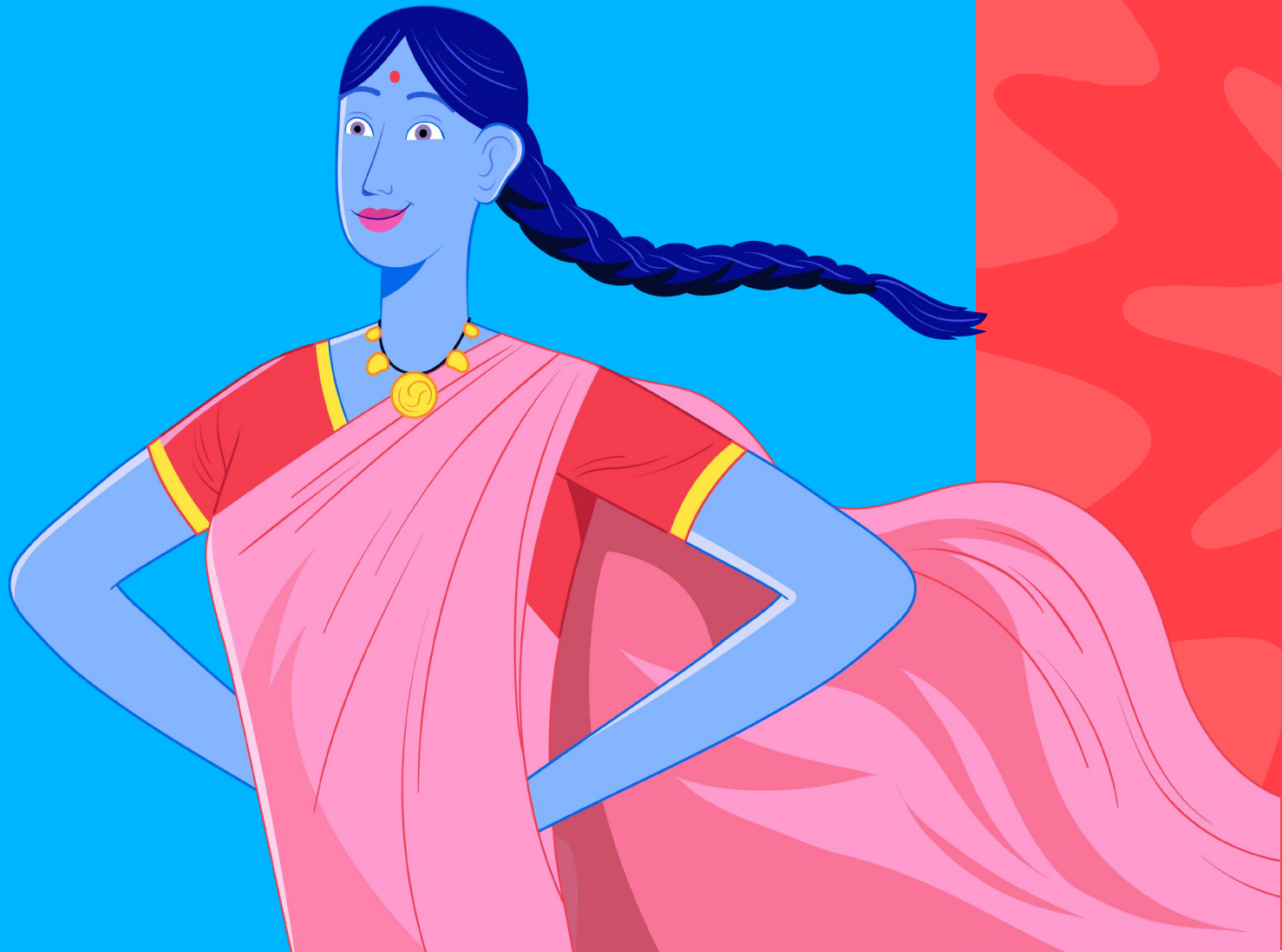


Tax paid by country 2024



Unilever



Unilever files around 450 corporate income tax returns each year. Within the Income Statement of our Annual Report and Accounts, we provide our Group tax charge with accompanying analysis and narrative in the tax note (note 6) to further explain the tax figures in the Income Statement and the Balance Sheet. The table below focuses on the tax paid figure which is in the cash flow statement.

Contents

- [Tax paid vs tax charge](#) 3
- [Tax paid by country 2024](#) 4
- [UK and Netherlands tax paid](#) 9
- [Negative taxes collected](#) 10



Tax paid vs tax charge

The 2024 cash tax paid figure of €2,625m is higher than the tax charge figure in the income statement of €2,500m.

Tax payments relating to a particular year's profits will typically be due partly in the current year and partly in the following year, so the 2024 tax paid figure includes payments relating to both 2024 and 2023.

The cash tax paid figure for a particular year also frequently includes amounts relating to earlier periods on settlement of issues with tax authorities. These could be either additional payments or refunds.

Where countries show no tax paid this is generally because they have made a loss either in the current period or in previous periods and the local tax legislation allows for offset of brought forward losses against profits of later years. This can also be due to timing differences (see below). There are also some rare cases, such as the United Arab Emirates in 2024, where countries do not have corporation tax.

The tax charge in the income statement includes both current tax and deferred tax, which is an accounting adjustment arising from timing differences. These timing differences occur when an item has to be included in the financial statements in one year but is required by law to be taxed/deducted for tax in another year.

Tax paid by country 2024

	Country	CORPORATE TAX PAID (EUR m)	TOTAL TAX CONTRIBUTION (EUR m)			Average number of employees	OPERATIONS IN COUNTRY			
		Corporate tax paid (inc. withholding tax)	Total taxes borne	Total taxes collected	Total tax contributed		Factory	Sales	R&D	Business Group HQ
1	Algeria	4	8	6	14	299				
2	Argentina	50	140	181	321	3,259				
3	Australia	23	30	43	73	1,040				
4	Austria	2	7	9	16	160				
5	Bahrain	0	0	0	0	53				
6	Bangladesh	40	76	45	121	1,321				
7	Belgium	7	22	26	48	252				
8	Bolivia	2	3	3	6	224				
9	Brazil	164	568	662	1,230	11,486				
10	Bulgaria	0	0	0	0	142				
11	Cambodia	12	13	6	20	144				
12	Canada	7	18	61	79	1,050				
13	Chile	11	14	18	32	597				
14	China	120	223	226	448	7,017				
15	Colombia	32	45	66	111	1,645				
16	Costa Rica	17	26	7	33	547				
17	Cote d'Ivoire	3	8	3	10	172				
18	Croatia	0	0	0	0	20				
19	Cuba	0	1	0	1	4				
20	Cyprus	0	1	3	4	35				

The withholding tax is shown in the paying countries' figures as this is the tax authority which receives the money.

Taxes borne include corporation tax, withholding taxes, employment taxes, sales taxes, customs duties, sustainability and local taxes.

Taxes collected are taxes collected from employees and customers on behalf of governments and include VAT/sales taxes.

R&D are the locations for our six main Global R&D Centres (includes two in the UK).

	Country	CORPORATE TAX PAID (EUR m)	TOTAL TAX CONTRIBUTION (EUR m)			Average number of employees	OPERATIONS IN COUNTRY			
		Corporate tax paid (inc. withholding tax)	Total taxes borne	Total taxes collected	Total tax contributed		Factory	Sales	R&D	Business Group HQ
21	Czech Republic	1	6	10	17	262				
22	Denmark	2	14	18	32	188				
23	Dominican Republic	1	5	6	11	49				
24	Ecuador	17	21	18	39	615				
25	Egypt	4	10	11	22	1,308				
26	El Salvador	9	11	35	46	515				
27	Estonia	0	0	3	3	15				
28	Ethiopia	13	17	3	20	319				
29	Finland	0	1	8	9	94				
30	France	20	82	238	320	1,720				
31	Germany	4	62	66	127	2,854				
32	Ghana	4	15	6	21	252				
33	Greece	(4)	4	11	15	459				
34	Guatemala	6	6	4	11	75				
35	Honduras	2	3	4	7	66				
36	Hong Kong	5	5	0	5	149				
37	Hungary	5	20	18	38	1,182				
38	India	378	428	735	1,163	20,667				
39	Indonesia	100	114	114	228	5,128				
40	Iran	8	8	5	14	281				

The withholding tax is shown in the paying countries' figures as this is the tax authority which receives the money.

Taxes borne include corporation tax, withholding taxes, employment taxes, sales taxes, customs duties, sustainability and local taxes.

Taxes collected are taxes collected from employees and customers on behalf of governments and include VAT/sales taxes.

R&D are the locations for our six main Global R&D Centres (includes two in the UK).

	Country	CORPORATE TAX PAID (EUR m)	TOTAL TAX CONTRIBUTION (EUR m)			Average number of employees	OPERATIONS IN COUNTRY			
		Corporate tax paid (inc. withholding tax)	Total taxes borne	Total taxes collected	Total tax contributed		Factory	Sales	R&D	Business Group HQ
41	Ireland	5	7	22	28	132				
42	Israel	7	15	54	70	1,806				
43	Italy	1	37	147	184	2,087				
44	Japan	11	15	17	32	419				
45	Kazakhstan	(0)	1	0	1	26				
46	Kenya	2	8	5	13	422				
47	Laos	4	5	2	6	50				
48	Latvia	0	0	3	4	31				
49	Lithuania	1	1	6	7	136				
50	Malawi	0	0	0	0	0				
51	Malaysia	15	21	2	23	390				
52	Mexico	161	203	(6)	197	7,525				
53	Morocco	0	2	6	8	109				
54	Myanmar	2	3	5	8	816				
55	Nepal	3	9	4	13	235				
56	Netherlands	227	302	161	463	2,724				
57	New Zealand	5	6	7	13	71				
58	Nicaragua	4	7	6	13	62				
59	Niger	0	0	0	0	0				
60	Nigeria	2	6	3	9	602				

The withholding tax is shown in the paying countries' figures as this is the tax authority which receives the money.

Taxes borne include corporation tax, withholding taxes, employment taxes, sales taxes, customs duties, sustainability and local taxes.

Taxes collected are taxes collected from employees and customers on behalf of governments and include VAT/sales taxes.

R&D are the locations for our six main Global R&D Centres (includes two in the UK).

	Country	CORPORATE TAX PAID (EUR m)	TOTAL TAX CONTRIBUTION (EUR m)			Average number of employees	OPERATIONS IN COUNTRY			
		Corporate tax paid (inc. withholding tax)	Total taxes borne	Total taxes collected	Total tax contributed		Factory	Sales	R&D	Business Group HQ
61	Norway	0	1	7	8	24				
62	Oman	0	0	0	1	94				
63	Pakistan	75	83	94	177	1,728				
64	Panama	1	3	2	5	48				
65	Paraguay	4	5	2	6	100				
66	Peru	5	6	11	17	91				
67	Philippines	98	114	101	215	1,924				
68	Poland	(10)	9	(17)	(7)	2,540				
69	Puerto Rico	8	9	0	9	16				
70	Romania	4	7	24	30	1,459				
71	Russia	21	34	44	78	1,316				
72	Saudi Arabia	7	22	10	32	322				
73	Serbia	0	0	0	0	5				
74	Singapore	11	17	(5)	12	527				
75	Slovakia	2	4	18	22	87				
76	South Africa	38	47	55	102	2,534				
77	South Korea	12	15	4	18	258				
78	Spain	2	19	77	96	651				
79	Sri Lanka	11	26	24	49	872				
80	Sweden	(1)	11	46	58	369				

The withholding tax is shown in the paying countries' figures as this is the tax authority which receives the money.

Taxes borne include corporation tax, withholding taxes, employment taxes, sales taxes, customs duties, sustainability and local taxes.

Taxes collected are taxes collected from employees and customers on behalf of governments and include VAT/sales taxes.

	Country	CORPORATE TAX PAID (EUR m)	TOTAL TAX CONTRIBUTION (EUR m)			Average number of employees	OPERATIONS IN COUNTRY			
		Corporate tax paid (inc. withholding tax)	Total taxes borne	Total taxes collected	Total tax contributed		Factory	Sales	R&D	Business Group HQ
81	Switzerland	225	239	20	259	530				
82	Taiwan	4	6	3	9	377				
83	Tanzania	(0)	(0)	0	(0)	0				
84	Thailand	85	89	81	171	2,949				
85	Trinidad and Tobago	1	1	1	2	31				
86	Tunisia	1	3	2	5	193				
87	Turkey	33	56	92	148	2,454				
88	UAE	0	3	4	6	689				
89	Uganda	4	6	4	9	29				
90	Ukraine	1	2	2	4	91				
91	United Kingdom	4	115	164	279	6,706				
92	United States of America	386	498	355	853	9,376				
93	Uruguay	9	10	9	19	92				
94	Venezuela	2	17	5	22	226				
95	Vietnam	56	60	43	103	1,504				
96	Zimbabwe	1	2	1	3	27				

The withholding tax is shown in the paying countries' figures as this is the tax authority which receives the money.

Taxes borne include corporation tax, withholding taxes, employment taxes, sales taxes, customs duties, sustainability and local taxes.

Taxes collected are taxes collected from employees and customers on behalf of governments and include VAT/sales taxes.

R&D are the locations for our six main Global R&D Centres (includes two in the UK).

UK and Netherlands tax paid

As can be seen from the Table of taxes, both the Netherlands and the UK have an operating business (factory, sales) and R&D centres, as well as being home to the Business Group headquarters of the Unilever group. The headquarters of Unilever's Nutrition and Ice Cream Business Groups are based in the Netherlands and the Home Care and Personal Care Business Groups are headquartered in the UK. The Beauty & Wellbeing Business Group is based partly in the US and partly in the UK.

In the UK there was a significant reduction in taxable profits in 2024, mainly due to increased interest costs, residual central group costs, and utilisation of losses brought forward, resulting in lower tax payments.

Corporate income tax paid in the Netherlands in 2024 is at a similar level to 2023. Both years include payments related to the year itself and earlier years. Additionally, 2024 cash tax includes an element connected to (taxed) pension refunds.

Negative taxes collected

The taxes collected figure is negative tax for Mexico as a result of higher creditable VAT on purchases of raw materials taxed at 16% and the sale of certain products at 0% VAT.

The taxes collected figure for Poland is negative due to refunds of VAT received from the Polish tax authorities in 2024. Our products sold in Poland are taxed at a mix of VAT rates (23%, 8%, 5%) whilst input costs are at the standard 23% rate, resulting in large VAT balances to be refunded.

The taxes collected figure for Singapore is negative due to GST refunds received from the Inland Revenue Authority of Singapore in 2024. The majority of the goods and services supplied by UAPL are exported with 0% GST whilst most of the goods and services procured locally are subject to GST at the standard rate of 9% in 2024, 8% in 2023, and 7% prior to 2023, resulting in a net GST refundable position.

